

# Argent 25 Series

## Commercial Network / Server Rack

**ARGENT**

Product Data Sheet



### Applications

Data Centres • Government • Corporate Infrastructure • Media



## Features

### COLOURS

Standard: Textura Black

Textura colour range available

### KEY FEATURES & BENEFITS

The unique 'H' frame design is a key innovation for the Argent 25 Series. The H frame offers cabinet rigidity and generous cable entry paths.

The new square patterned cable ladder provides a more versatile cable installation/management solution.

- Scalable side cable entry brush strips maximising cable entry patching
- Top straight drop cable pathways from overhead cable trays minimising cable bending
- Cable pathways allow patching from front to rear/rear to front
- 4x4 post design provides a rigid frame without compromising flexibility
- Left or right hand opening doors for more cabinet orientation options within a room
- Tool-less removable doors – simple lift-off design gives greater installation access
- Supplied fully assembled
- Designed to EIA - 310 standards
- 10 year Australian manufacturers warranty
- Static load capacity 1000kgs

### WHAT IS INCLUDED IN THE RACK

- Modular frame
- Perforated front door with integrated 3 point locking system
- Perforated rear barn doors with integrated 3 point locking system
- Labelled vertical angles
- Lockable, removable side panels
- Cable management trays x2
- Levelling feet x4
- Top panel with cable access. Brush strips fitted

### OPTIONAL EXTRAS

- Vertical front cable manager – front and/or rear
- Horizontal cable managers – left to right/right to left cable paths
- Cable chimney available to conceal unsightly bundles of cables
- Cable slack spools available – assists orderly management of cable slack
- Top and door fan options available
- Mobility castor options available

### SERVICES

- Project Engineering Drawings service available. Conditions apply.





# Configuration & Part Numbering Guide

**Part Number** 5ARG 25.AA.BBB.CCCC

**CUSTOM SIZES & CONFIGURATIONS AVAILABLE**

**DIMENSIONS (mm)**

RU Width Depth

RACK UNITS	HEIGHT	WIDTHS	DEPTHS	PART CODES
12U	704	600	600	5ARG 25.12.600.600
			800	5ARG 25.12.600.800
			1000	5ARG 25.12.600.1000
			1200	5ARG 25.12.600.1200
		800	600	5ARG 25.12.800.600
			800	5ARG 25.12.800.800
			1000	5ARG 25.12.800.1000
			1200	5ARG 25.12.800.1200
18U	971	600	600	5ARG 25.18.600.600
			800	5ARG 25.18.600.800
			1000	5ARG 25.18.600.1000
			1200	5ARG 25.18.600.1200
		800	600	5ARG 25.18.800.600
			800	5ARG 25.18.800.800
			1000	5ARG 25.18.800.1000
			1200	5ARG 25.18.800.1200
27U	1371	600	600	5ARG 25.27.600.600
			800	5ARG 25.27.600.800
			1000	5ARG 25.27.600.1000
			1200	5ARG 25.27.600.1200
		800	600	5ARG 25.27.800.600
			800	5ARG 25.27.800.800
			1000	5ARG 25.27.800.1000
			1200	5ARG 25.27.800.1200
38U	1860	600	600	5ARG 25.38.600.600
			800	5ARG 25.38.600.800
			1000	5ARG 25.38.600.1000
			1200	5ARG 25.38.600.1200
		800	600	5ARG 25.38.800.600
			800	5ARG 25.38.800.800
			1000	5ARG 25.38.800.1000
			1200	5ARG 25.38.800.1200
42U	2037	600	600	5ARG 25.42.600.600
			800	5ARG 25.42.600.800
			1000	5ARG 25.42.600.1000
			1200	5ARG 25.42.600.1200
		800	600	5ARG 25.42.800.600
			800	5ARG 25.42.800.800
			1000	5ARG 25.42.800.1000
			1200	5ARG 25.42.800.1200
45U	2171	600	600	5ARG 25.45.600.600
			800	5ARG 25.45.600.800
			1000	5ARG 25.45.600.1000
			1200	5ARG 25.45.600.1200
		800	600	5ARG 25.45.800.600
			800	5ARG 25.45.800.800
			1000	5ARG 25.45.800.1000
			1200	5ARG 25.45.800.1200



**ARGENT 10 SERIES**  
Lite Server Cabinets



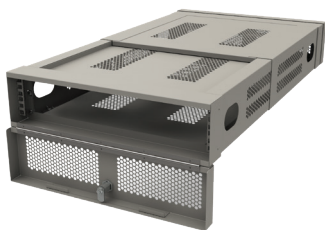
**ARGENT 25 SERIES**  
Network / Server Racks



**ARGENT 40 SERIES**  
Open Data Rack / Lab Rack



**ARGENT 50 SERIES**  
SCEC Class B & Class C  
Server racks



**V 50 DATA VAULT**  
PATENTED, IN RACK SECURITY



**DATA CAGES**  
MODULAR SYSTEM

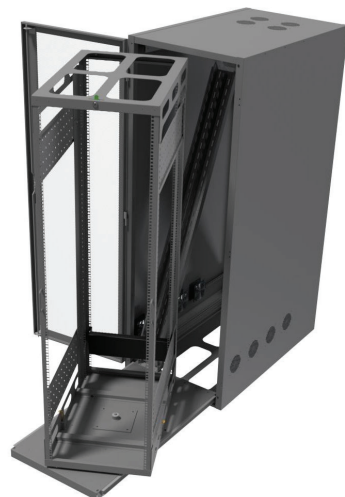
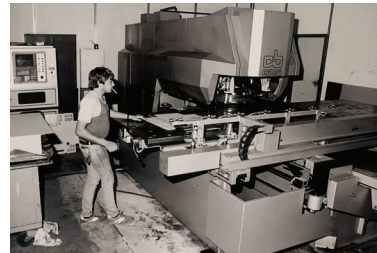
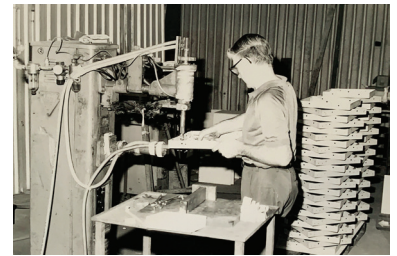


**WALL MOUNTED RACKS**



**Wilson & Gilkes** opened its doors in the post-WWII economic reconstruction period. Since that time 75 years ago, the company has seen dramatic manufacturing, economic and social changes. In those early years it would have been almost impossible to imagine Wilson & Gilkes using automated laser technology to perform complex, precise metal cutting to produce Argent server racks.

Even with the assistance of world class manufacturing equipment, Wilson & Gilkes believes in the quality of its people to achieve flexible manufacturing solutions to achieve optimum results for Argent customers. The company employs qualified staff including Industrial Designers, Mechanical Engineers, Electricians, Sheetmetal trades, Fitters and Machinists, Toolmakers, Powder Coaters and Welders.



### ARGENT DESIGN SERVICE

Argent server racks are used by Sydney Trains, and other large infrastructure and defence projects. Our team received a national corporate client's verbal concept for a rack that would incorporate integrated internal glide rails and a swivelling base. After successful prototypes and testing, Argent has now supplied over 400 of these racks that are in use everyday across Australia.

Argent has a team of industrial designers with years of storage system manufacturing experience. 3D images and drawings can be provided to assist with a solution that will meet your needs.



### ARGENT MANUFACTURING, FABRICATION & ASSEMBLY

From design concept to finished product, every step in the process is managed in-house by Wilson & Gilkes.

### AS 9001 ACCREDITED QUALITY SYSTEM

Argent is totally committed to an externally accredited, globally recognised quality system. We conduct spot quality checks in the manufacturing facility every day. The Wilson & Gilkes QA system works to create a better organisation for our clients and our staff.

