

# Argent 50 Series

## Security Server / Network Racks

**ARGENT**

Product Data Sheet



### Applications

Defence Bases •  
Government Security



**KEY FEATURES AND OPTIONS AVAILABLE**

- SCEC endorsed June 2016
- IEC & Industry standard sizes make selection easy
- Custom sizing available
- Perforated doors with 3 point locking. Optional polycarbonate window or solid doors
- Side panels. Optional ventilated side panel
- Wide range of thermal & cable management accessories
- Finish – Powder coat black, other colours available
- KABA Class B digital combination locking mechanism
- Class C - Specified key system

**OPTIONAL EXTRAS**

- Fan tops (thermostatic control options)
- Scalable Hiflow doors
- Directional fan trays (used at hot spots)
- Cable Management
- Shelving

**APPLICATIONS**

- Defence sites
- Government Bodies/Departments
- Secure data server/communication rooms
- Data Centres Secure / High Density

**RELATED ACCESSORIES**

- PDU's (tool-less technology), PDU Trays (on request)
- Shelving (19" mounting & cantilever vented and solid fixed & slide out versions)
- Vertical finger cable managers Horizontal Duct & Ring cable managers
- Plinth with leveling feet
- Airdam/Baffle kit for thermal management
- Power distribution units single & three phase
- Air containment system – cold aisle & hot aisle
- Data Security Cages

**SCEC APPROVED CABLE ENTRY**

- Cable entry into the Argent 50 Series rack is a key component of the SCEC specification
- Argent has extensive experience in design and manufacture of the Class B and Class C enclosures
- Argent can assist with options for approved cable entries and help select the best option for the application
- Please contact Argent for more information on this important aspect of a SCEC approved rack

**ARGENT SCEC CLASS B & C GUIDE**

Selection guide is available on request



# Security Class B & Class C Server Racks

## SPECIFICATIONS

- B&C Class SCEC Approved Design Rack – IEC 60297
- Available in wall mount series: 6RU / 12RU / 18RU
- Available in free standing series: 18RU / 27RU / 39RU / 42RU / 45RU / 46RU
- Available depths: 700 / 800 / 900 / 1000 / 1050 / 1100 / 1200mm
- Useable Equipment Space – see Height, Width, Depth information below
- Full welded equipment rack for the protection of classified material
- Fully welded zinc anneal steel frame, all panels are made from zinc anneal steel
- Perforated rack doors with 3 point locking (standard option) or solid door or 6mm polycarbonate window
- Doors incorporated with either C Class L handled bilock (keyed alike) or B Class combination locks, KABA X10 series
- Doors >180 degree opening access
- All side panels are solid form & internally secured
- Comes with 4x Vertical Mounting Angles, RU Labeled
- Racks are individually serialized, name plated with identification with registry record
- Discrete ventilation on side panels (on request)
- 50 pack hardware fixing kits with each rack

## STANDARD INCLUSIONS

- Welded steel 4 post frame
- 4x Vertical Mounting Angles
- 2x Cable Trays
- Security Cable Baffle Kits
- 50x Fixing kits

## DOORS/LOCK KITS

- Perforated, solid and Polycarbonate doors
- Choice of B or C Class locking mechanisms
- Hinge pins allow easy door removal during maintenance
- Left or Right hinged door options

## SIDE PANELS

- Solid side panels

## TOP /BOTTOM PANELS

- Includes top and bottom panels

## EQUIPMENT SUPPORT

- 2 Pairs of vertical mounting angles in each rack (additional rails available on request)
- RU Labeled angles
- Square punched holes to accept cage nuts
- Chassis support rails (available on request)

## LOAD CAPACITY

- 1200kg

## OPTIONAL GROUNDING/BONDING

- Earth Bar
- Earth Stud
- Earth wiring cord (component attaching accessory)

## CERTIFICATIONS

- SCEC Approved June 2016
- QA Accreditation ISO 9001

## MATERIAL

- Steel body, rails, doors & panels (polycarbonate window option to door)

## CONSTRUCTION

- Fully Welded Frame
- Mounting angles bolted to frame
- Sides, internally secured
- Doors hinged with secure locking mechanism options

## FINISH

- Powder Coat: Black, Other colours available (on request)

## SCEC APPROVED CABLE ENTRY

- Cable entry into the Argent 50 Series rack is a critical component of the SCEC specification
- Argent has extensive experience in design and manufacture of the Class B and Class C enclosures
- Argent can assist with options for approved cable entries and help select the best option for the application
- Please contact Argent for more information on this important aspect of a SCEC approved rack

RU	HEIGHT (mm)	OPTIMAL WIDTHS (mm)				OPTIONAL DEPTH (mm)						
18RU	950	600	700	750	800	700	800	900	1000	1050	1100	1200
27RU	1350	600	700	750	800	700	800	900	1000	1050	1100	1200
39RU	1884	600	700	750	800	700	800	900	1000	1050	1100	1200
42RU	2017	600	700	750	800	700	800	900	1000	1050	1100	1200
45RU	2150	600	700	750	800	700	800	900	1000	1050	1100	1200
46RU	2195	600	700	750	800	700	800	900	1000	1050	1100	1200





**ARGENT 10 SERIES**  
Lite Server Cabinets



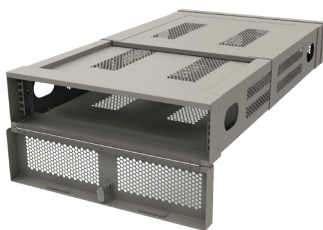
**ARGENT 25 SERIES**  
Network / Server Racks



**ARGENT 40 SERIES**  
Open Data Rack / Lab Rack



**ARGENT 50 SERIES**  
SCEC Class B & Class C  
Server racks



**V 50 DATA VAULT**  
PATENTED, IN RACK SECURITY



**DATA CAGES**  
MODULAR SYSTEM

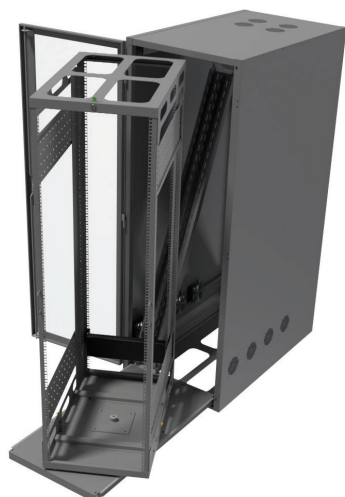
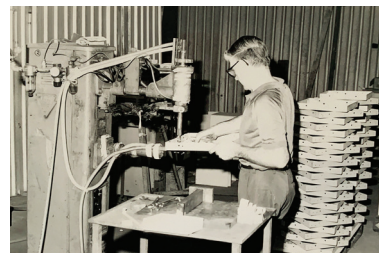


**WALL MOUNTED RACKS**



**Wilson & Gilkes** opened its doors in the post-WWII economic reconstruction period. Since that time 75 years ago, the company has seen dramatic manufacturing, economic and social changes. In those early years it would have been almost impossible to imagine Wilson & Gilkes using automated laser technology to perform complex, precise metal cutting to produce Argent server racks.

Even with the assistance of world class manufacturing equipment, Wilson & Gilkes believes in the quality of its people to achieve flexible manufacturing solutions to achieve optimum results for Argent customers. The company employs qualified staff including Industrial Designers, Mechanical Engineers, Electricians, Sheetmetal trades, Fitters and Machinists, Toolmakers, Powder Coaters and Welders.



### ARGENT DESIGN SERVICE

Argent server racks are used by Sydney Trains, and other large infrastructure and defence projects. Our team received a national corporate client's verbal concept for a rack that would incorporate integrated internal glide rails and a swivelling base. After successful prototypes and testing, Argent has now supplied over 400 of these racks that are in use everyday across Australia.

Argent has a team of industrial designers with years of storage system manufacturing experience. 3D images and drawings can be provided to assist with a solution that will meet your needs.



### ARGENT MANUFACTURING, FABRICATION & ASSEMBLY

From design concept to finished product, every step in the process is managed in-house by Wilson & Gilkes.

### AS 9001 ACCREDITED QUALITY SYSTEM

Argent is totally committed to an externally accredited, globally recognised quality system. We conduct spot quality checks in the manufacturing facility every day. The Wilson & Gilkes QA system works to create a better organisation for our clients and our staff.

